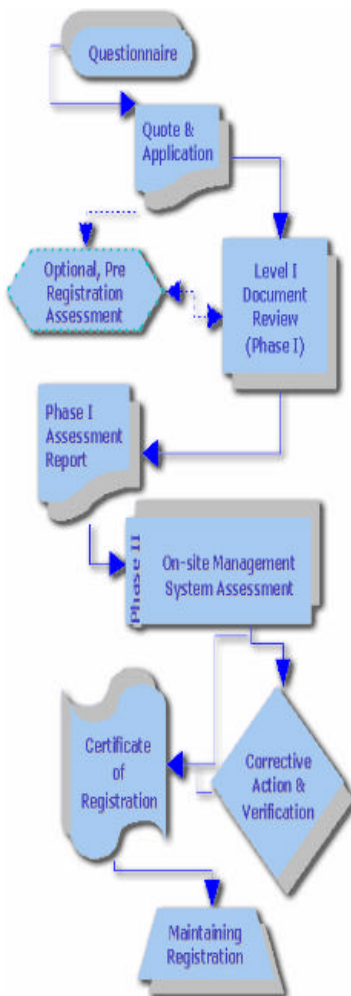




Western—Pacific USA ISO 9001:2000, ISO 14001:2004, EMAS, ISO 22000:2005...

Special points of interest:

- Serving...
- BRS Process Approach and “Adding-Value-Assessment”
- Agile Documentation
- Competency



International Management System

Serving California, Nevada, Arizona, Washington, Oregon, Idaho...

In servicing the western and south USA, the BRS Global-Net is essential to assist in minimizing billing for travel time or travel costs.

We have assembled some of the finest professionals in the business to guide you in making your operating system better, better, better. We assesses your processes, activities, and practices to uncover change opportunities and not uniquely conformance—thereof BRS is not merely for registration, is a business partner. We are experts in quality, documentation, technology, “lean”, 6σ, and Kaizen so we can assist finding true improvement opportunities adding real value to your team, operating infrastructure and practices. We are knowledgeable in the evolution of regulatory changes for accountability, privacy, portability and other legal requirements (including

Sarbanes-Oxley).

Our continuous improvement approach is vitalize by “adding-value-assessment” which is integral part of both our mission statement and trademark. And the “colours” in our trademark reflect our values of integrity, ethics, cost-effectiveness, adding value vigilance, and social responsibility.

We are business professionals, change agents, and assessors who are experienced, pragmatic, result oriented, and customer-centric. We can go as fast as you need, or be as patient as required in helping you meet your business challenges and increasing your competitiveness. BRS can help you discover the



strengths and weaknesses of your business, allowing its core competencies to become strategic advantages in the market place.

Why BRS?

- We are friendly, courteous, ethical, and competent
- We strive to contain costs not stretch billable days
- We maintain wide-open communication and deliver straight talk, respectfully
- We guarantee we can find improvement opportunities
- We are a forward-thinking organization with a truly global perspective,
- We protect your confidentiality as we protect our trademark, with passion

The BRS Process Approach Combining

The BRS “Adding-Value-Assessment” draws from our arsenal of contemporary improving principles 6σ, Kaizen and Lean in helping us understand your processes and assist you improve performance. The process approach is one of the key elements in helping us understand wherein to identify opportunities for improvement. For BRS, the process approach assists in building a

dynamic adding-value-assessment methodology.

Our management systems registration services address:

- Quality, ISO 9001:2000
- Environmental, ISO 14001 and EMAS Regulation
- Food Sector ISO 22000:2005 and HACCP MS

- Information Security, ISMS—ISO/IEC 17799 | ISO/IEC 27001
- Safety and Health, OSHMS (ILO-OSH | OHSAS | Loss Prevention)
- “Lean Manufacturing” - World Class

Agile Documentation



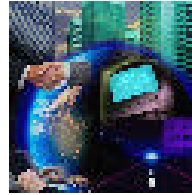
We understand application of technology and methods within Content Management, CRM, Information Security, BPM such that you can benefit from our understanding-knowledge-experience.

We assess and study documentation requirements by not merely focusing on confor-

mance but in truly understand your organization. Understanding on contemporary methods for contents and formats provides us with tools to ascertain not only understanding your systems but not in adding burden.

With the advent of ISO 9001:2000, ISO 14001:2004, EMAS, ISO 22000:2005 businesses are already benefiting

from a conformance-centric requirements to true compatibility between your business objectives, goals and vision.



Competency

Revisions and publishing of International Management Systems Standards address not only training and awareness implementing but in that these achieve improving competency of the organization.

The requirements invoked to gather, analyze and act

upon market and customer data is critical in the sense that *flows* into information... knowledge, and thus to implement as a fundamental basis integral to the managerial system from which benefits are on-going, continual improvement by improving competency through knowledge.

Competence is now a requirement for:

- QMS ISO 9001 (inquire on variants AS9100, ISO/TS 16949)
- EMS ISO 14001 and European Regulation EMAS (761/2001)
- FSMS ISO 22000 and HACCP MS
- OSHMS
- ISMS

BRS GlobalNet is an exclusive body of dedicated professional assessors and technical experts with first-hand global experience that can assist you in understanding challenges within a global economy.



Contacting us...

Canada—BRS GlobalNet Ontario, includes assessment members exclusive to BRS, BRS Management, and one of the BRS GlobalNet Oversight Board members.



California—BRS Rim of the World Office (Headquarter) in the Big Bear Mountains of Southern California includes BRS management Rim of the World Office.

Nevada and Arizona— Contact 1-888-BULLTEK for message center or 1.909.867.1188, international 1.909.867.4003

Idaho — Idaho, Falls, contact California

Europe & Scandinavia— Contacting BRS Rim of the World, or Spain, Sweden...

E-mail: globalnet@brsltd.org for inquiries on contacting your nearby BRS GlobalNet professional.

BRS
Rim of the World Office
31977 Hilltop Boulevard, Suite D—PO Box 1020
Running Springs, California. USA 92382-1020

International TEL; 1+909.867.4003
24 x 7 USA and Fax 909.867.1188
www.brsltd.org | globalnet@brsltd.org